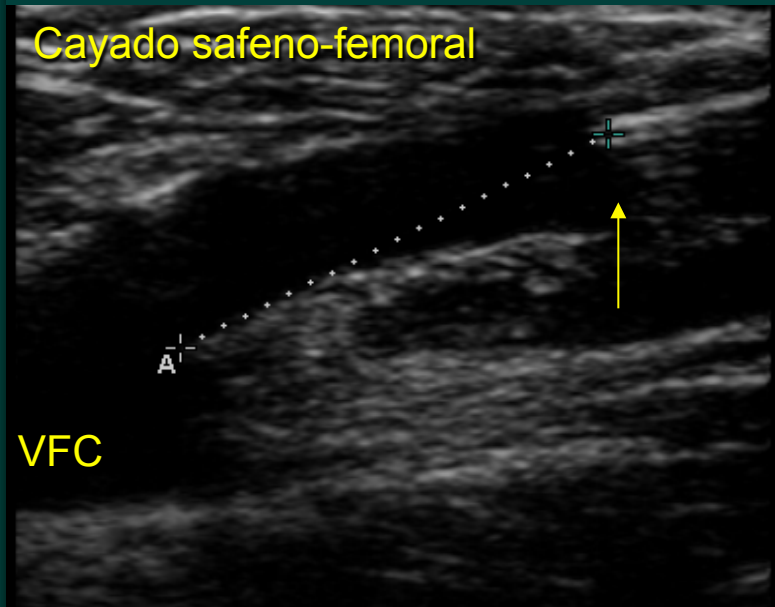
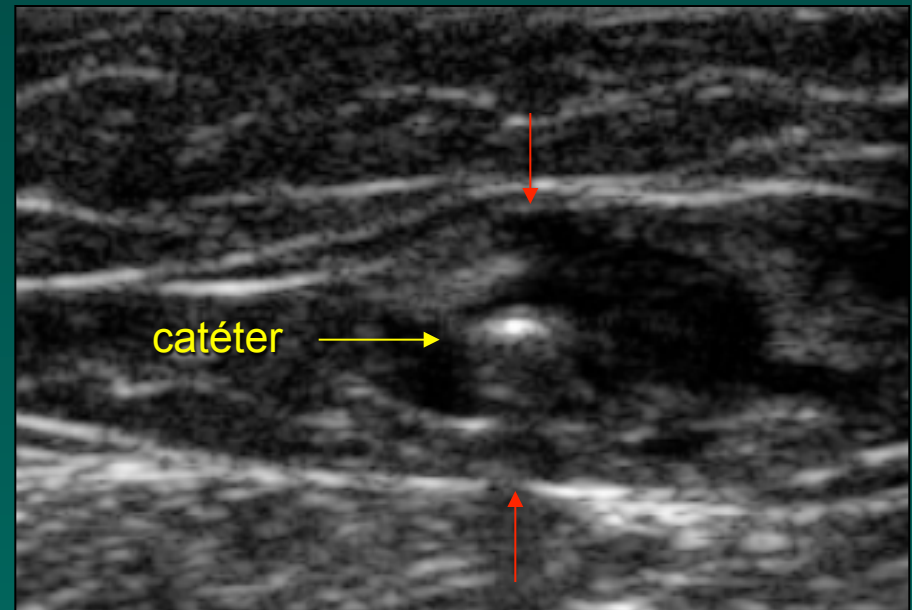


# Procedimiento



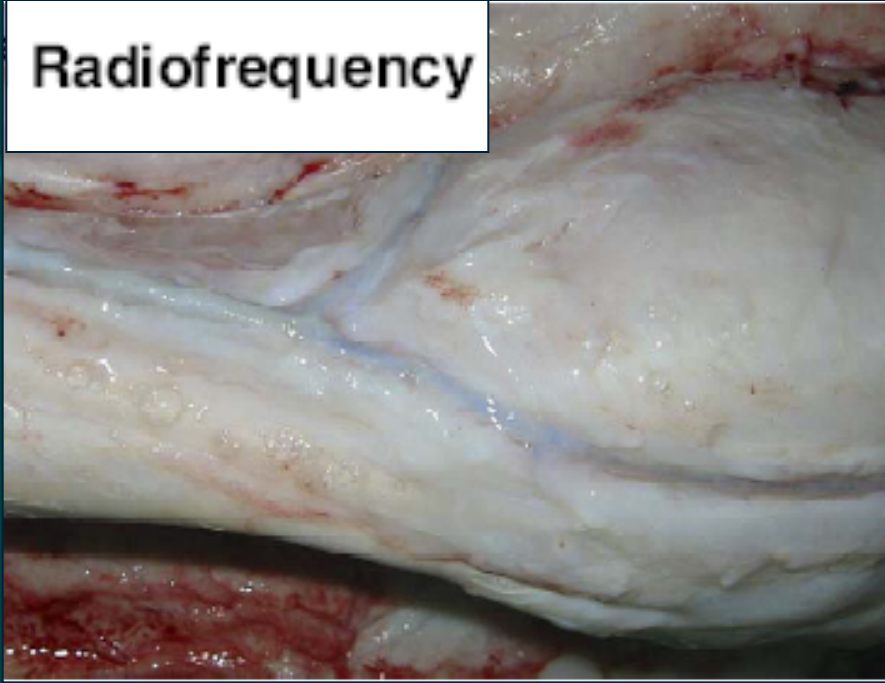
Posicionamiento catéter



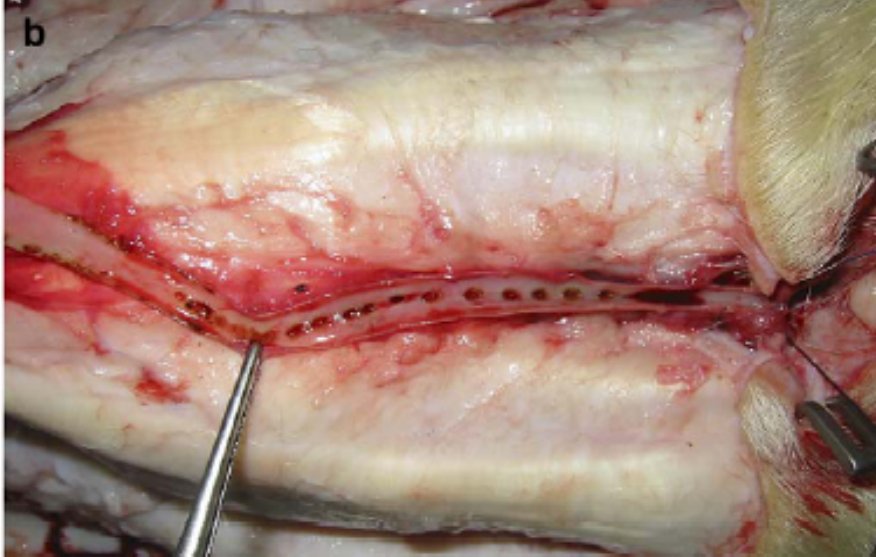
Anestesia tumescente

# Investigation on Radiofrequency and Laser Effects

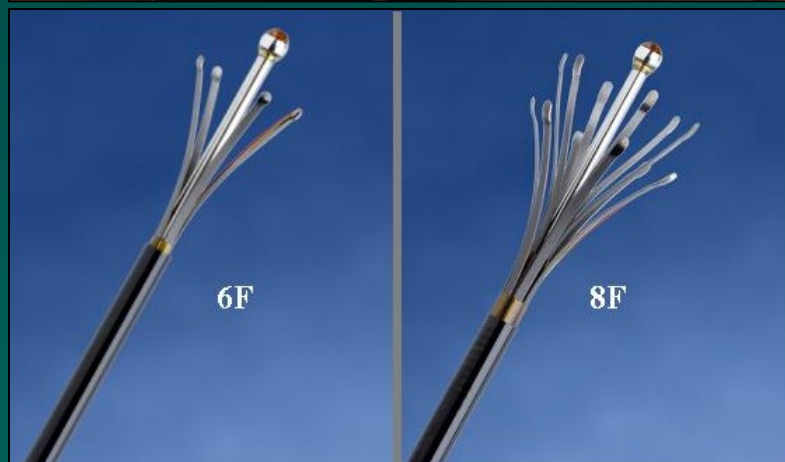
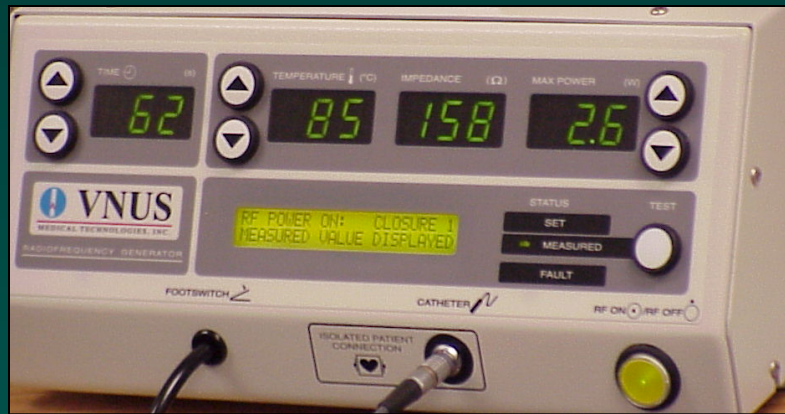
## Radiofrequency



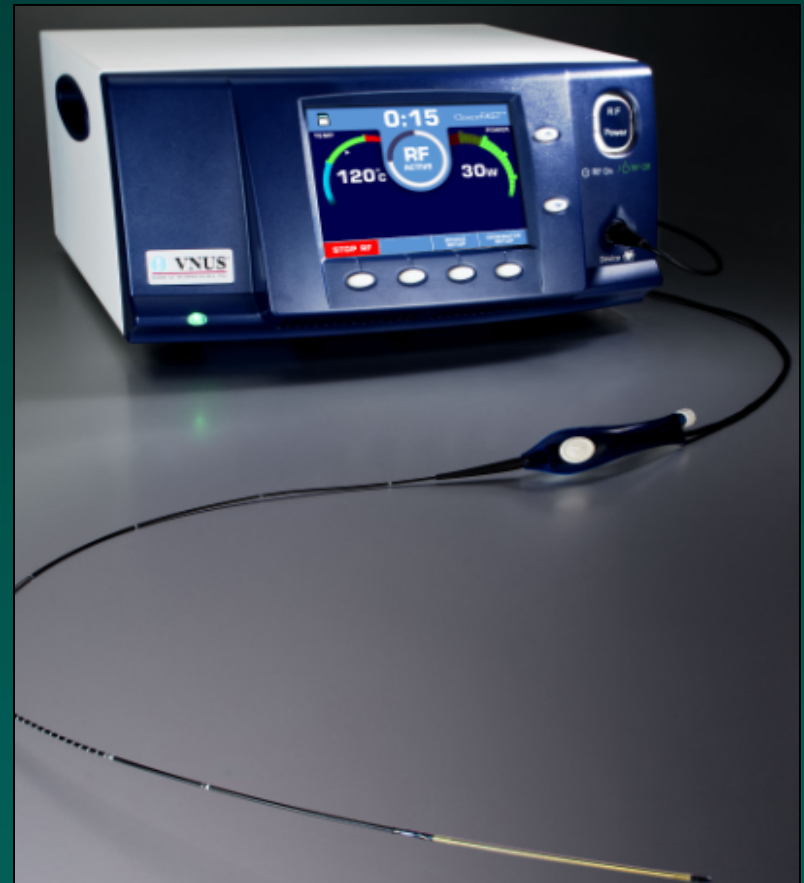
## Laser Effects



# Radiofrecuencia VNUS Closure

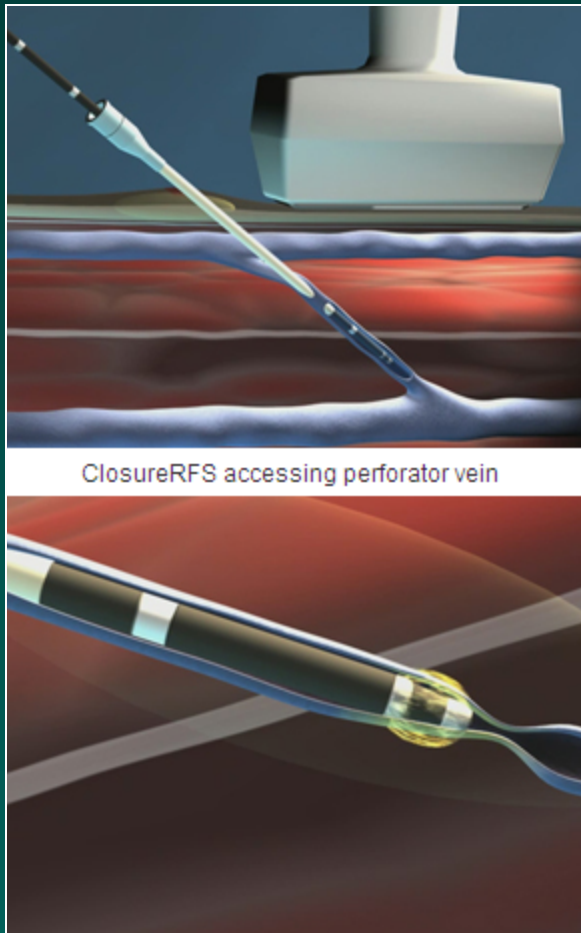


Closure *Plus*®



Closure *FAST*™

# Sistema RF Closure<sup>®</sup>



- Técnica ambulatoria sin ingreso
- Anestesia local tumescente.
- Actividad normal el mismo día.
- Altamente efectiva con tasa de oclusión superior al 90% mantenidas a los 5 años.

