

PARTICULARITATS EN EL MANEIG DE LES ILEOSTOMIES I UROSTOMIES

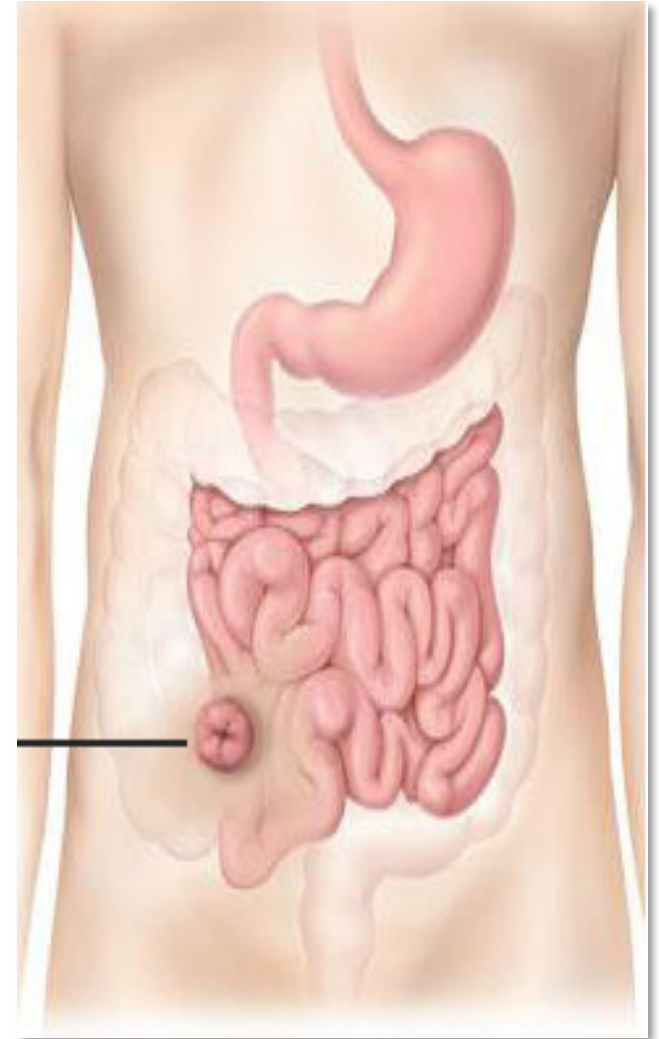
Irene Cots

(Infermera Estomaterapèuta H. U. Mútua Terrassa)

Barcelona 26 Febrer 2016

OSTOMIES DIGESTIVES

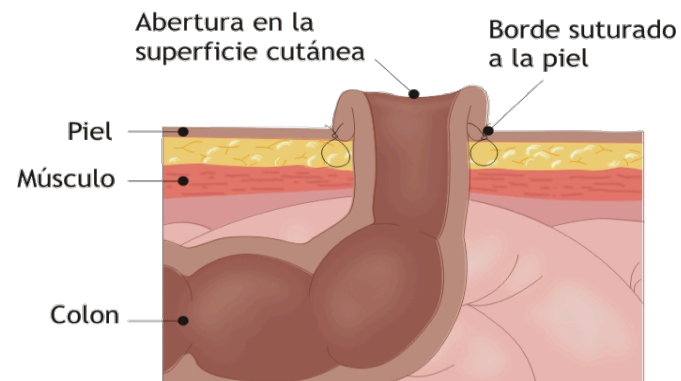
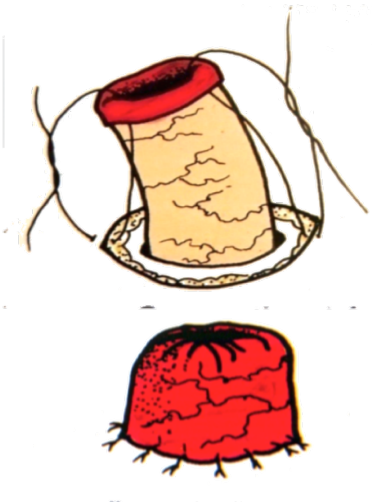
- ileostomies



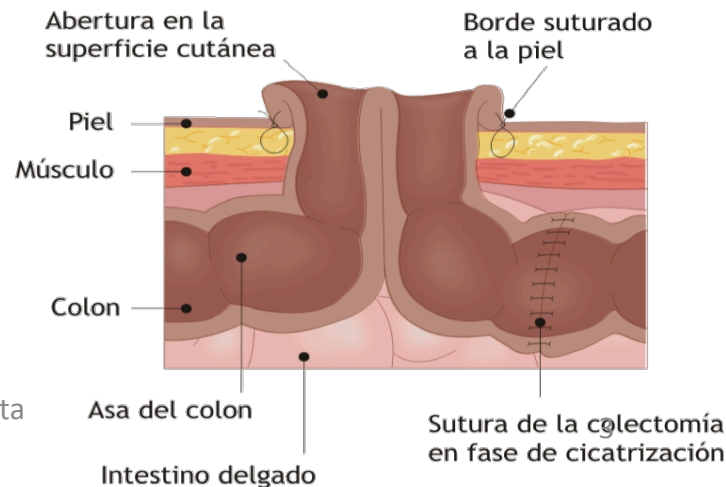
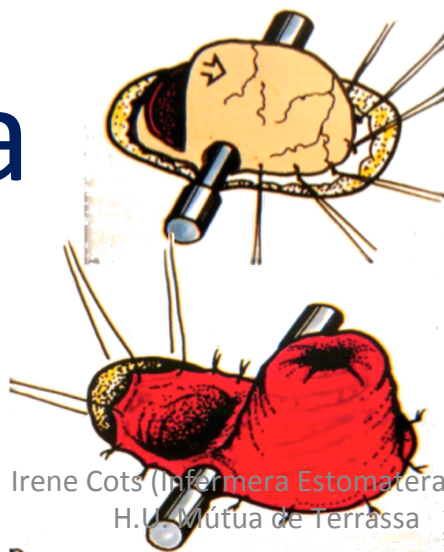
OSTOMIES DIGESTIVES

tipus:

- Terminals



- De nansa

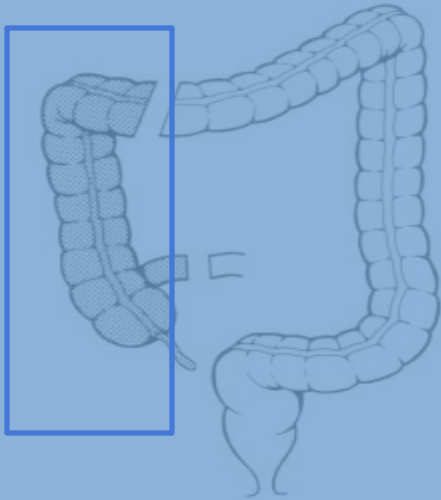


OSTOMIES DIGESTIVES

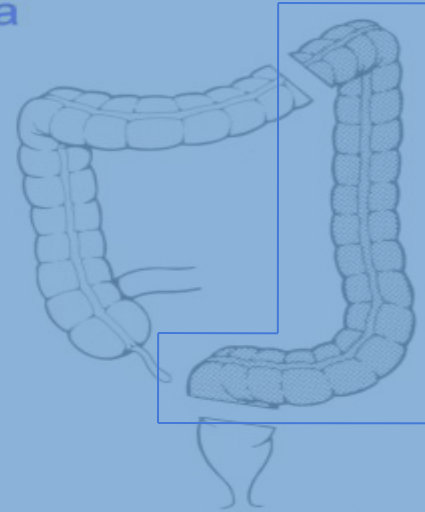
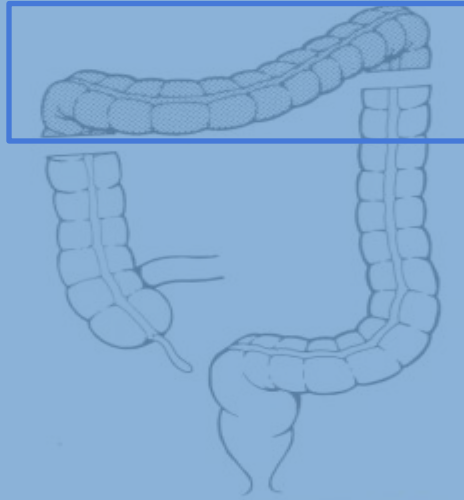
- Terminals
- De nansa



Colectomía transversa

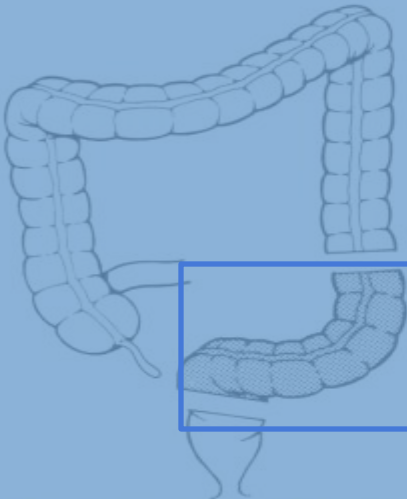


Hemicolectomía derecha

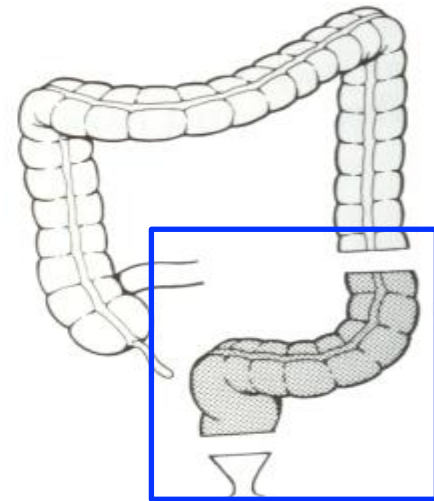
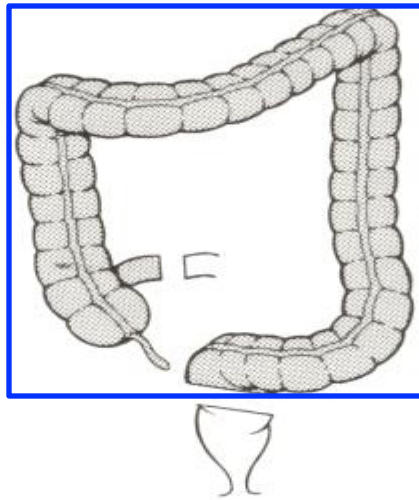


Hemicolectomía izquierda

Colectomía total

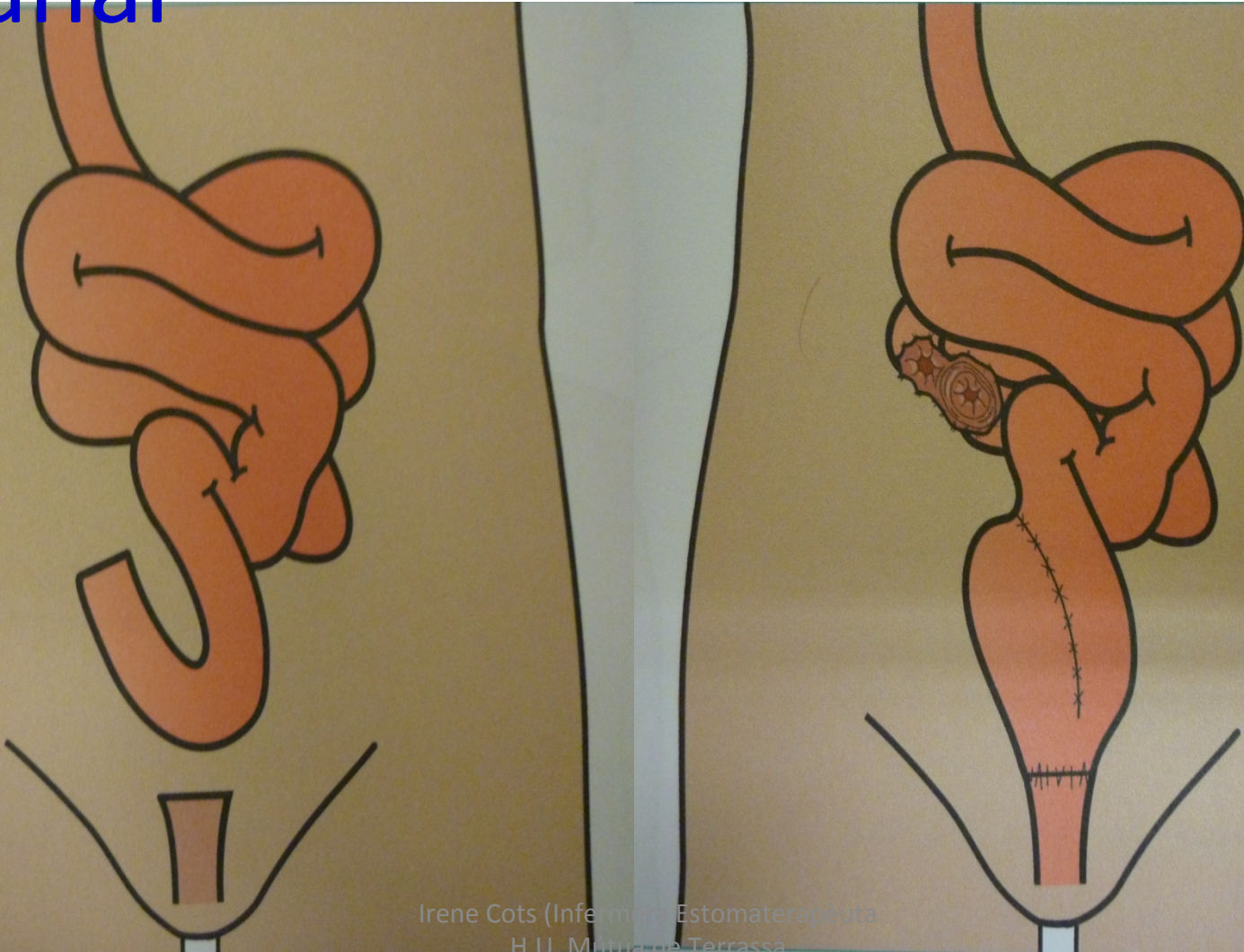


Colectomía sigmoidea

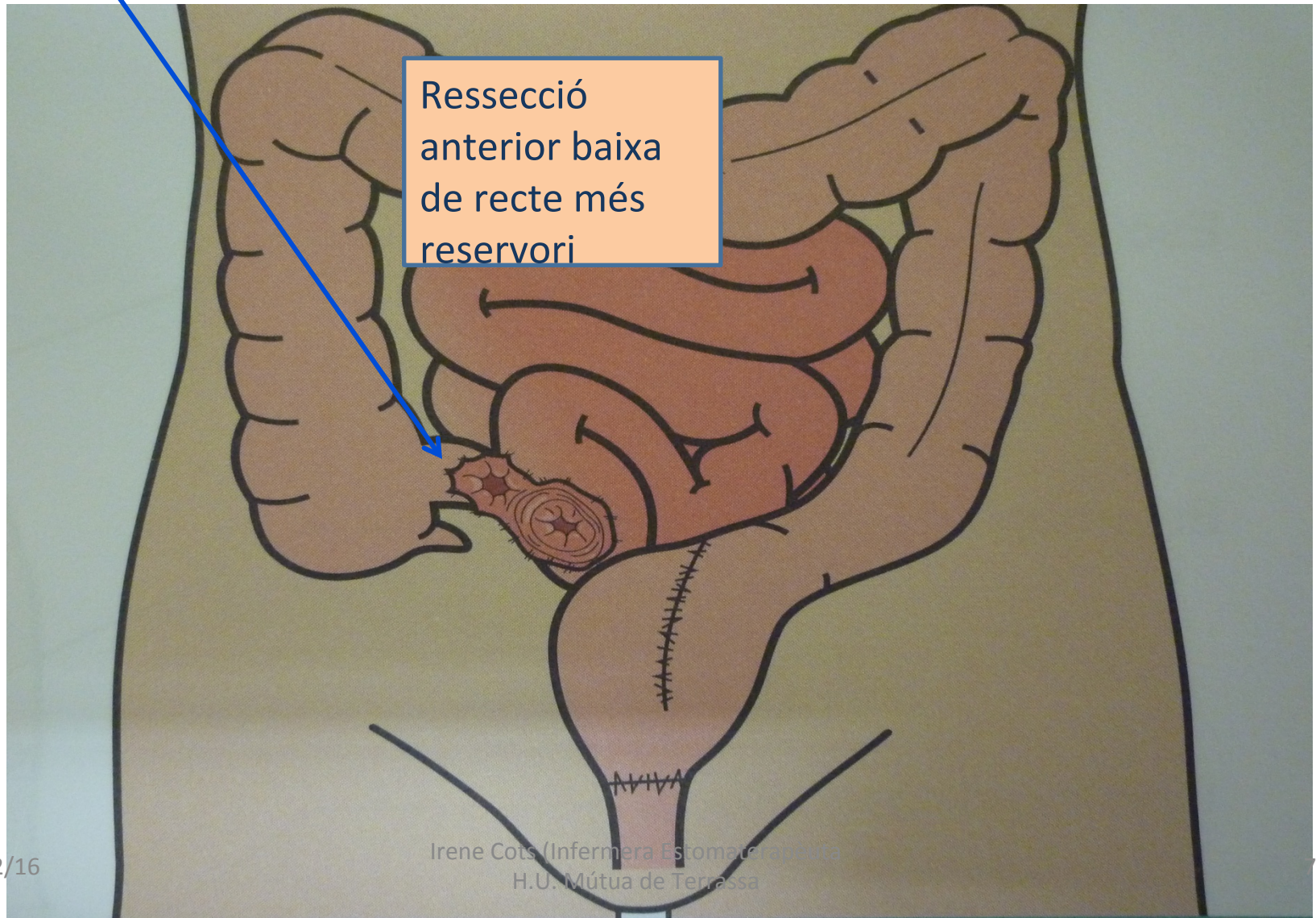


Resección anterior

Colectomia total + reservori ileoanal



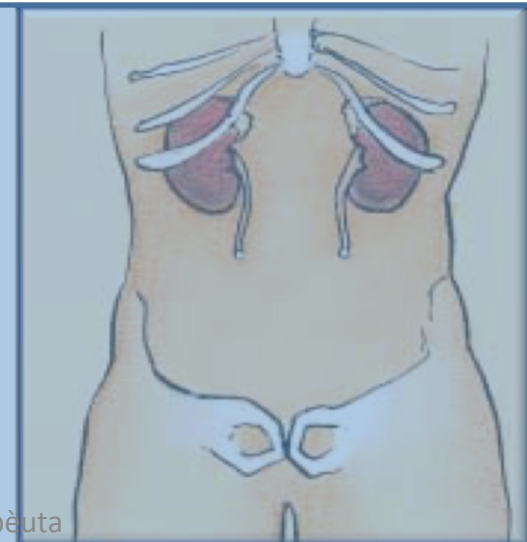
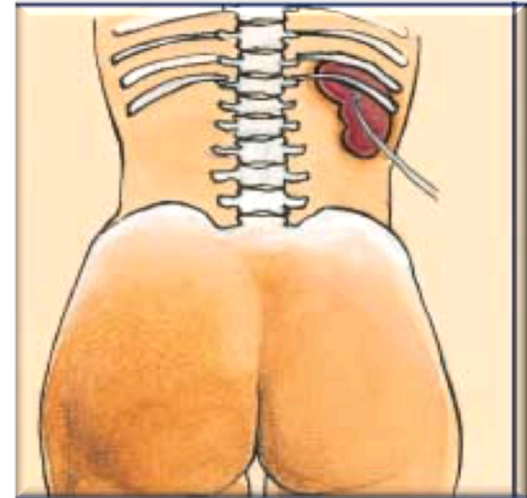
Ressecció anterior baixa (RAB) + ileostomia de protecció



OSTOMIES URINÀRIES

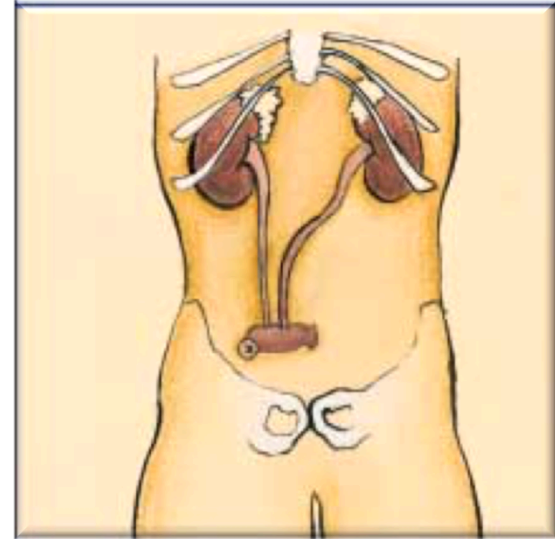
Segons ubicació:

- Nefrostomies
- ureterostomies

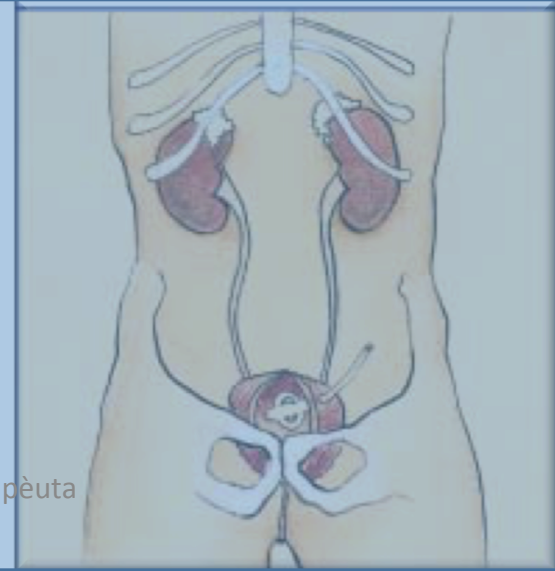


OSTOMIES URINÀRIES

- Ureteroileostomies cutànies



- Cistostomies o talla vesical



Ureteroileostomies cutànies tipus Bricker

